

# FREMONT

## SQUARE FOOTAGE

<b>3,150</b>	Total Footage
<b>1,575</b>	Main Level
<b>1,575</b>	Basement

## HOME SPECS

<b>3-6</b>	Bedrooms
<b>2-3</b>	Baths
<b>2-3</b>	Car Garage
<b>42'0</b>	Width
<b>52'0</b>	Depth

## PRICING

Farmhouse-  
Craftsman-



FARMHOUSE

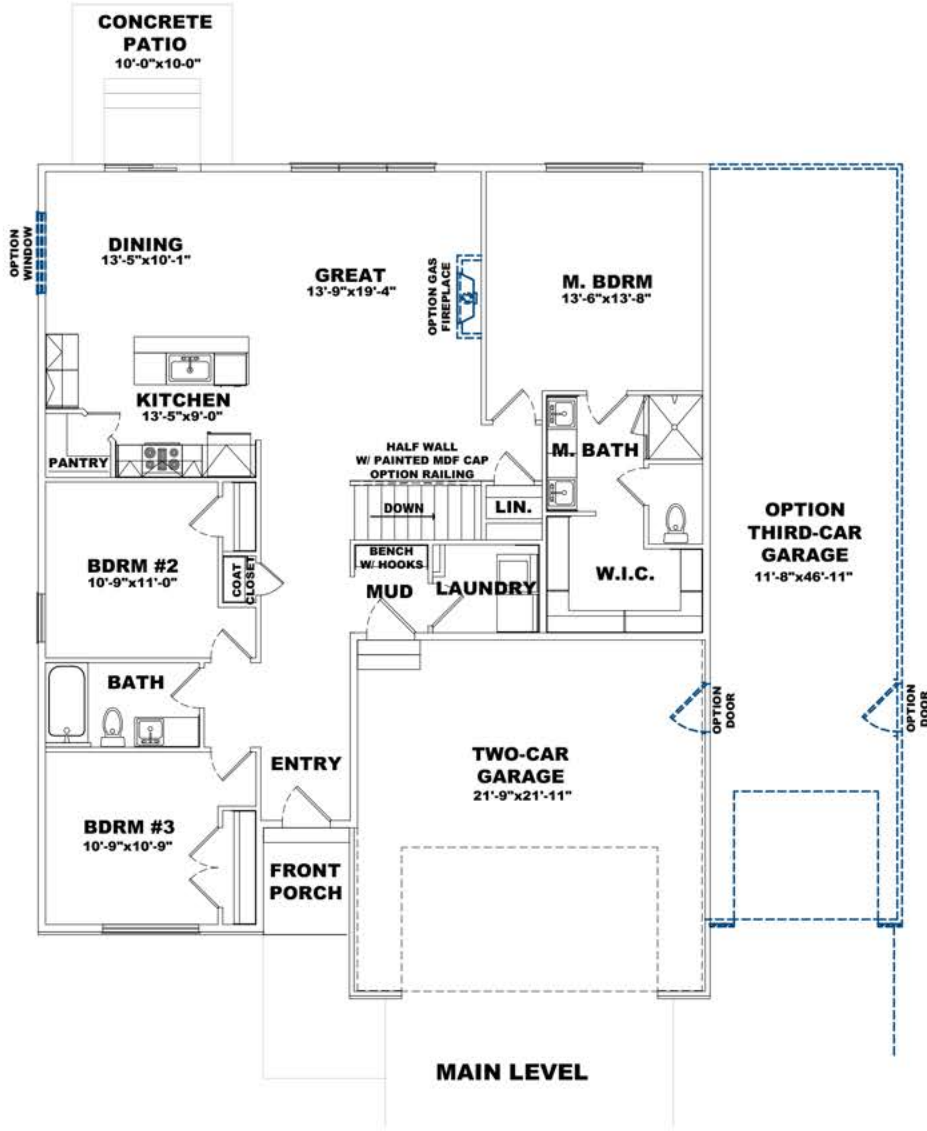


CRAFTSMAN

# FREMONT

## MAIN LEVEL

1,575 sq. ft.



## UNFINISHED BASEMENT

1,575 sq. ft.

