

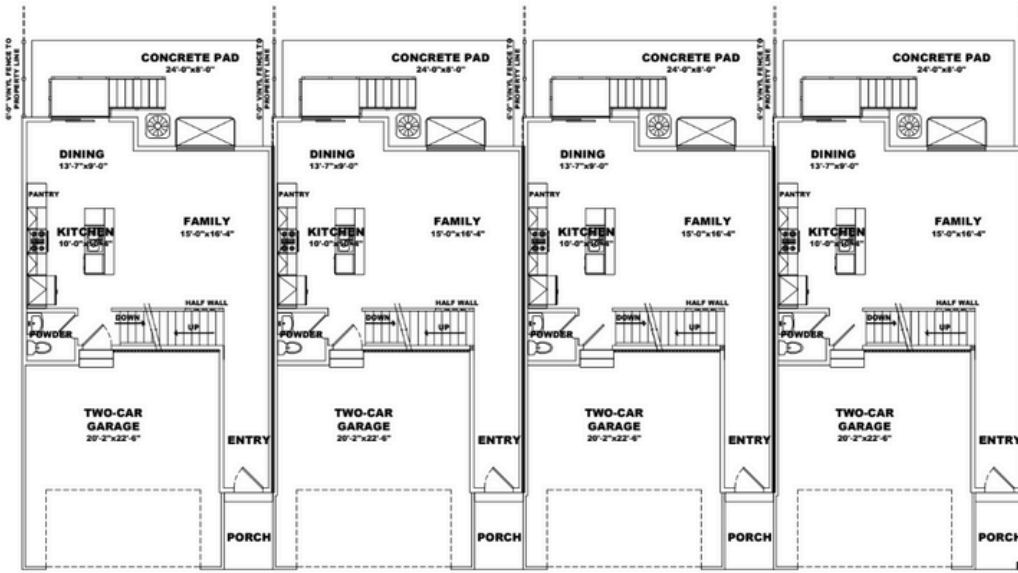
ASHTON



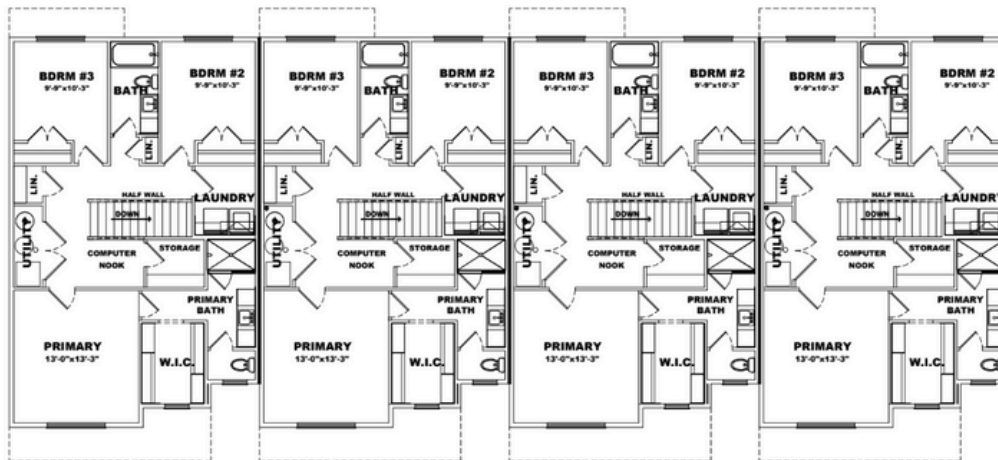
Scan to Learn More!

GOLDEN FOREST TOWNHOMES

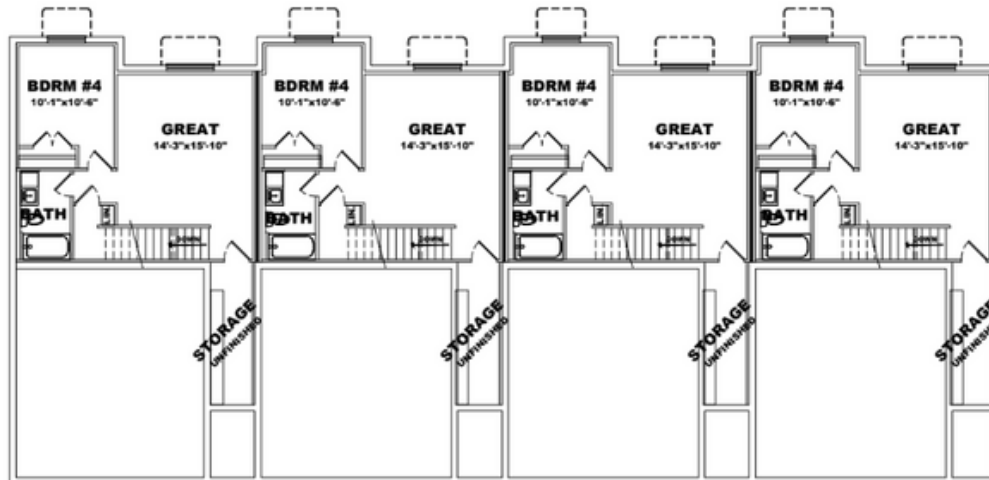
FRONT LOAD WITH BASEMENT



MAIN LEVEL



SECOND LEVEL



BASEMENT LEVEL

SQUARE FOOTAGE

Main Level	669 sq. ft.
Second Level	1,005 sq. ft.
Basement	577 sq. ft.
Total	2,251 sq. ft.

HOME SPECS

Bedrooms	4
Baths	3.5
Car Garage	2



Scan to Learn
More!



435.755.9530