

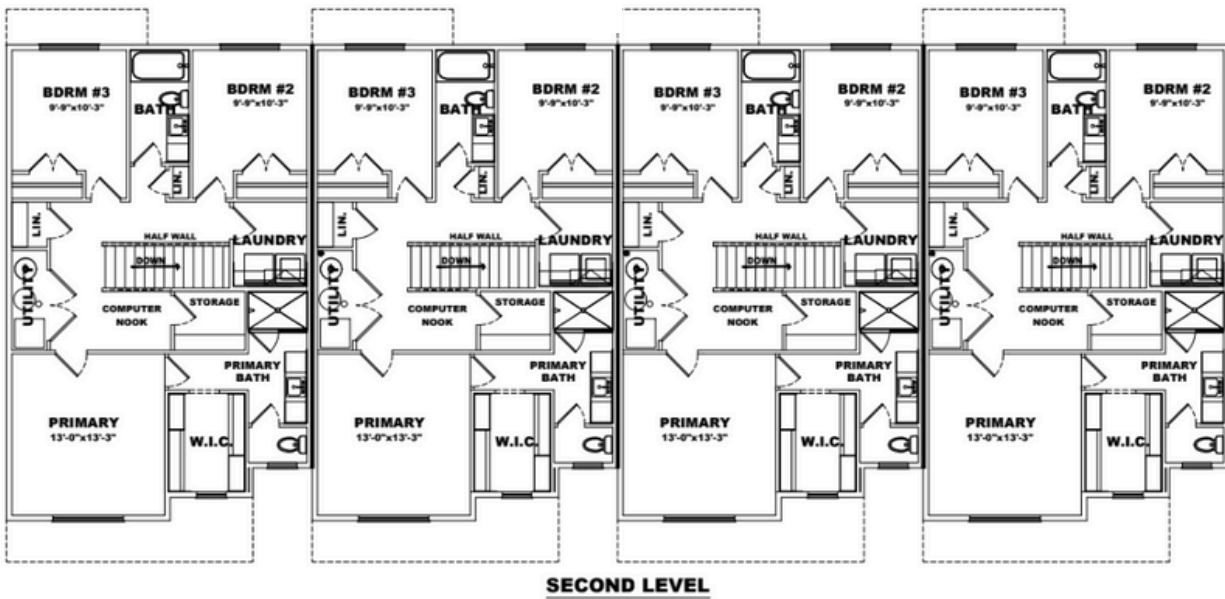
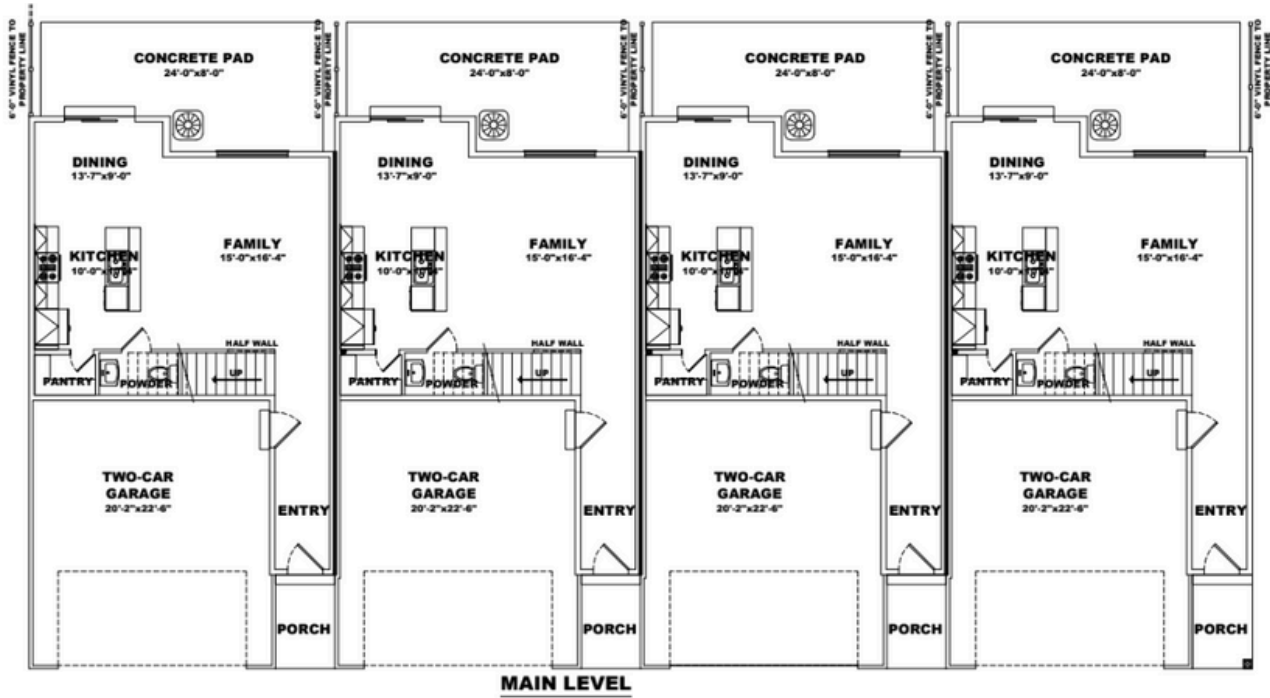
ASHTON



Scan to Learn More!

# GOLDEN FOREST TOWNHOMES

# FRONT LOAD SLAB-ON-GRADE



## SQUARE FOOTAGE

Main Level	660 sq. ft.
Second Level	1,004 sq. ft.
Total	1,664 sq. ft.

## HOME SPECS

Bedrooms	3
Baths	2.5
Car Garage	2



Scan to Learn  
More!



435.755.9530