

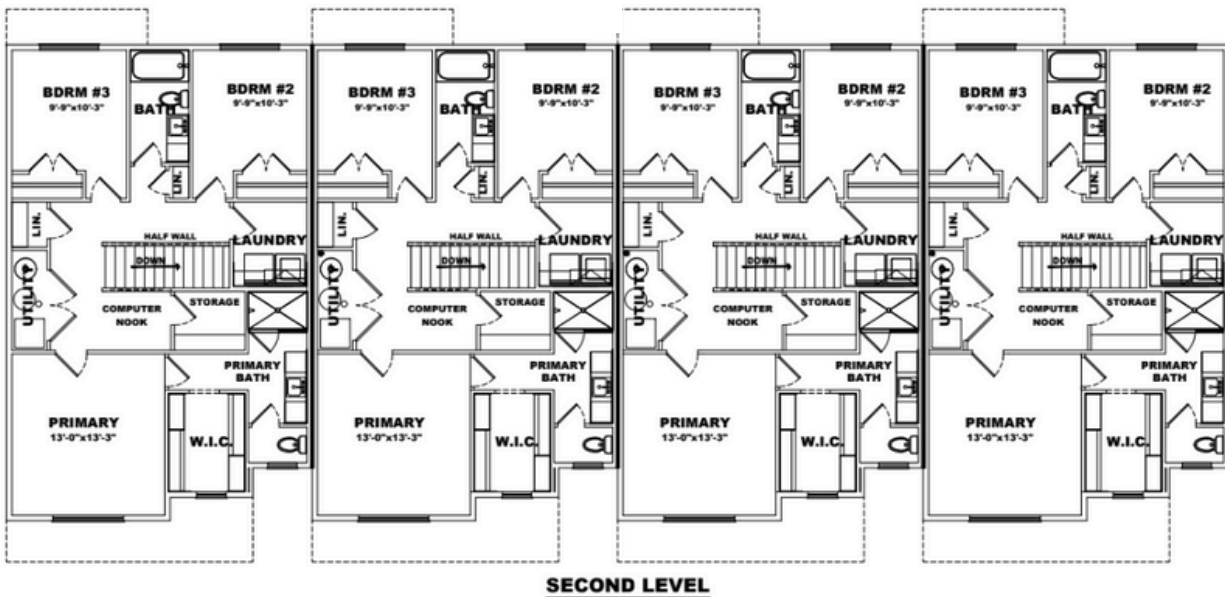
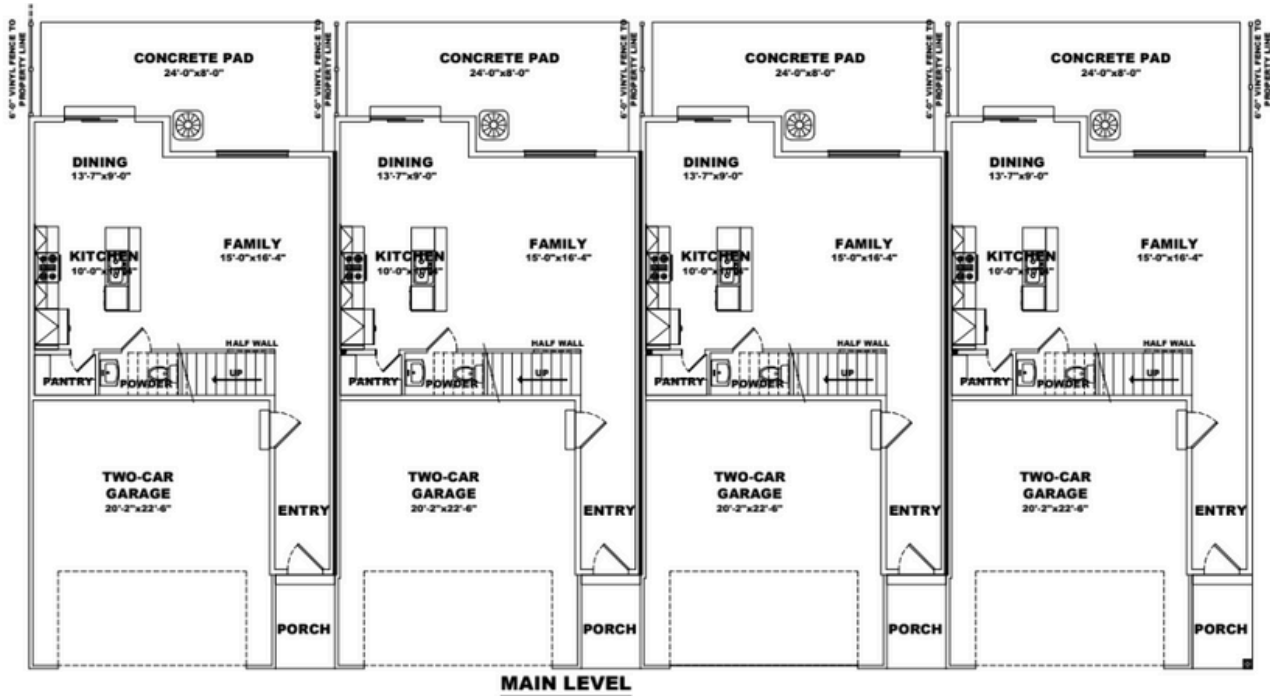
ASHTON



Scan to Learn More!

GOLDEN FOREST TOWNHOMES

FRONT LOAD SLAB-ON-GRADE



SQUARE FOOTAGE

Main Level	660 sq. ft.
Second Level	1,004 sq. ft.
Total	1,664 sq. ft.

HOME SPECS

Bedrooms	3
Baths	2.5
Car Garage	2



Scan to Learn
More!



435.755.9530